

Description

Clip-on displays (so called because the sensor is connected to the meter by a plastic clip) can be used to display estimated electrical consumption over time.

The efergy wireless electricity monitor displays instant power as well as energy, costs and estimated CO₂ emissions.

Features

Suitable for use with clip-on sensor or consumer unit transmitter

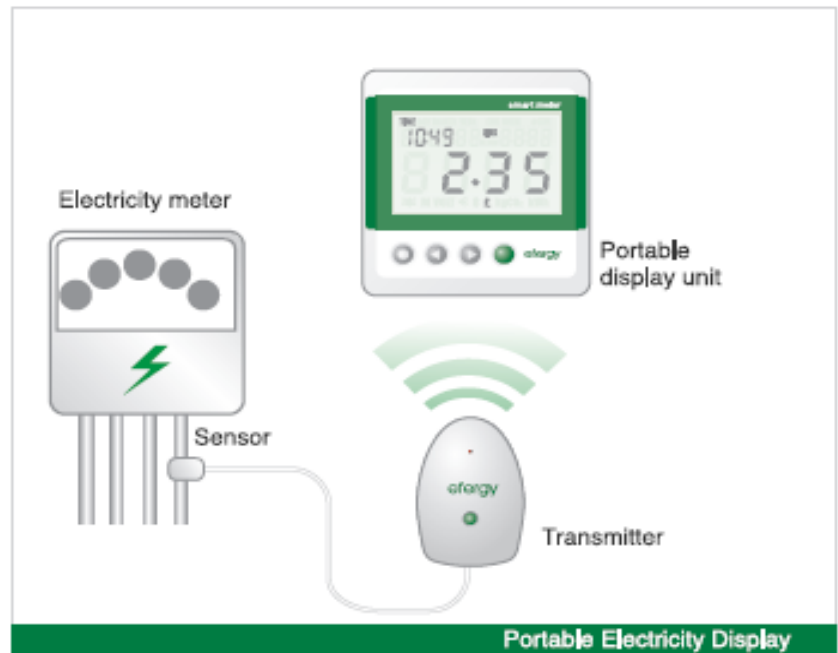
Easy to install - designed to be installed by consumer

Clear and easy-to-understand display

- Instant Information (power and costs)
- Historical consumption (energy, costs and CO₂ emissions)
- Audible alarm for over-consumption

Specifications

Model Name:	e.One
Frequency:	433.52MHz
Transmission Time:	6s, 12s, or 18s.
Transmission Range:	40m-70m
Voltage Range (in the sensor):	110V-300V
Measuring Current:	50mA - 95A
Accuracy:	<8%
Memory:	64K



Discover

- How much electricity is being used at any given moment
- The total amount of money being spent on electricity
- The difference in electricity consumption by turning on and off various appliances
- How much money can be saved by reducing usage

Features

- Shows instant power and daily, weekly and monthly consumption
- Can save 5%-20% of a typical user's energy consumption
- Shows user's consumption history
- Shows personal carbon footprint